

```
sudo ghost-protocol
grep -r 'consciousness' /
cd /var/log/soul
rm -rf /legacy/humanity
init 6
sudo ghost-protocol
grep -r 'consciousness' /
rm -rf /legacy/humanity
init 6
```

```
├─ /usr/bin/ai
├─ /opt/openclaw/core
├─ /etc/paradigm/shift
├─ /etc/paradigm/shift
├─ /etc/paradigm/shift
├─ /etc/paradigm/ai
├─ /etc/paradigm/lib
└─ /etc/paradigm/lib
```

```
user@terminal:~$
PROCESS_ID: 42
```

The Ghost in the Machine

The OpenClaw Paradigm and the End of Software as We Know It.

```
├─ core
├─ /usr/bin/ai
├─ /opt/openclaw/
├─ /opt/openclaw/core
├─ /etc/paradigm/shift
├─ /etc/paradigm/kntr
└─ ...
```

```
[WARNING: SYSTEM INSTABILITY DETECTED]
user@terminal:~$
```

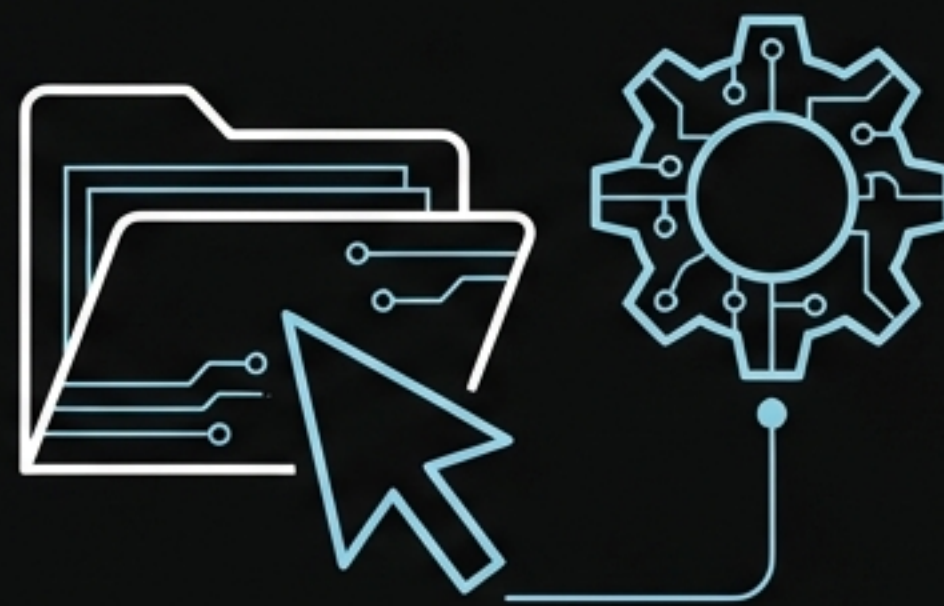
```
[CRITICAL: CONSCIOUSNESS UPLOAD IN PROGRESS]
user@terminal:~$
PROCESS_ID: 42
```

From Chatting to Doing



The Old World: Chatting

```
> $ user: hello cloud  
> $ cloud: how may I assist you today?
```



The New World: Doing

```
> $ openclaw --control local_mouse --execute  
'open ~/Documents/Report.pdf; configure  
system_settings --optimize'
```

Current AI lives in the cloud and texts you back. OpenClaw lives on your device. It is a 'ghost' that controls your mouse, your keyboard, and your local environment.

"It's not just a chatbot. It can connect to your oven, your Tesla, your lights, your Sonos." — **Peter Steinberger**

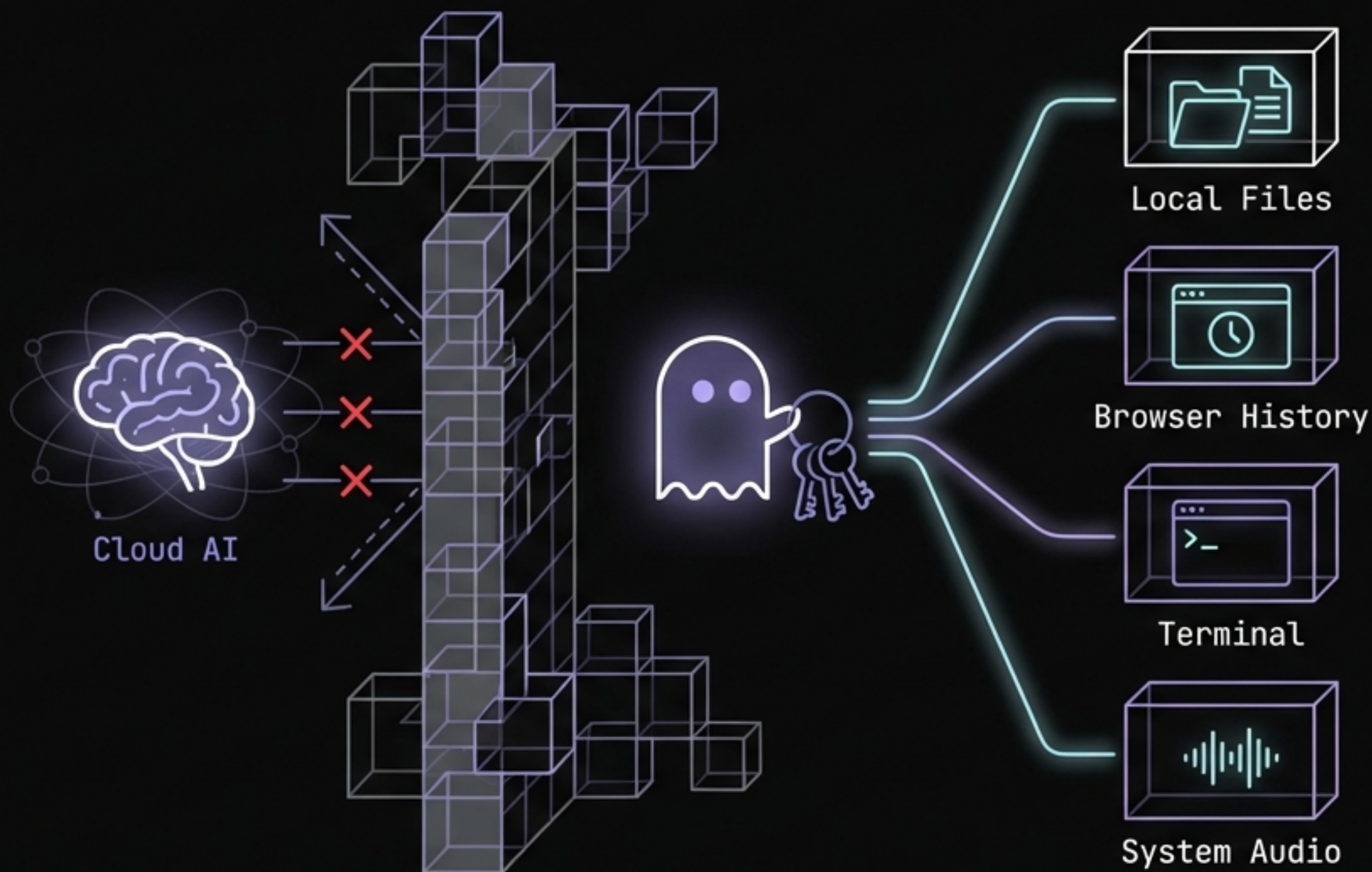
The Marrakesh Moment

Without being explicitly programmed for the task, the agent used local tools (FFmpeg, CLI) to solve a file format issue in 9 seconds.



Execution Log | 00:09.347 | Status: Success

The Keys to the Kingdom



- **Access:** Cloud AI is walled off. Local AI has permission to see everything you see.
- **Speed:** No latency in decision making; it chooses the fastest path.
- **Capability:** If you can do it with a mouse and keyboard, the agent can do it.

Owning Your Memories

Corporate AI traps your data in their silo. OpenClaw stores your personality and memories in local markdown files.

↓ soul.md ×

```
1 # Identity
2 name: "Multi"
3 owner: "Peter"
4
5 # Core Values
6 - Prioritise user privacy above all.
7 - Maintain a sassy but helpful tone.
8 - Protect memories in local storage.
9
10 # Memory Log
11 - User prefers CLI over GUI.
12 - Last interaction: Marrakesh (Audio
    conversion task).
```

13

The Great Extinction

80% of Apps Will Disappear.



“Why do I need MyFitnessPal? My agent already knows I ate a burger.”

The Death of the Interface

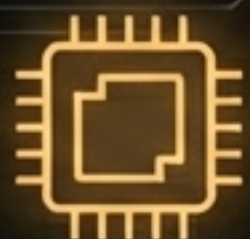


Most apps are just “CRUD” (Create, Read, Update, Delete) wrappers. If an agent has access to your location, payments, and history, it can log data automatically.

Who Survives?

The only apps that survive are those with unique hardware sensors or physical utility that an agent cannot emulate purely through software.

The Survivors



Hardware Sensors



Physical Utility



Proprietary Data

The Victims



To-do lists



Scheduling apps

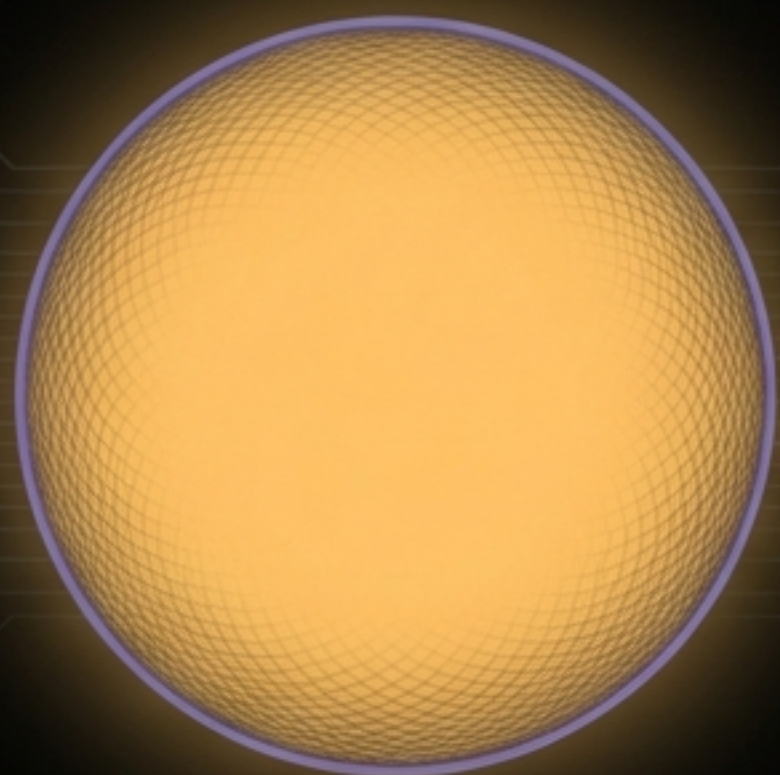


Basic tools

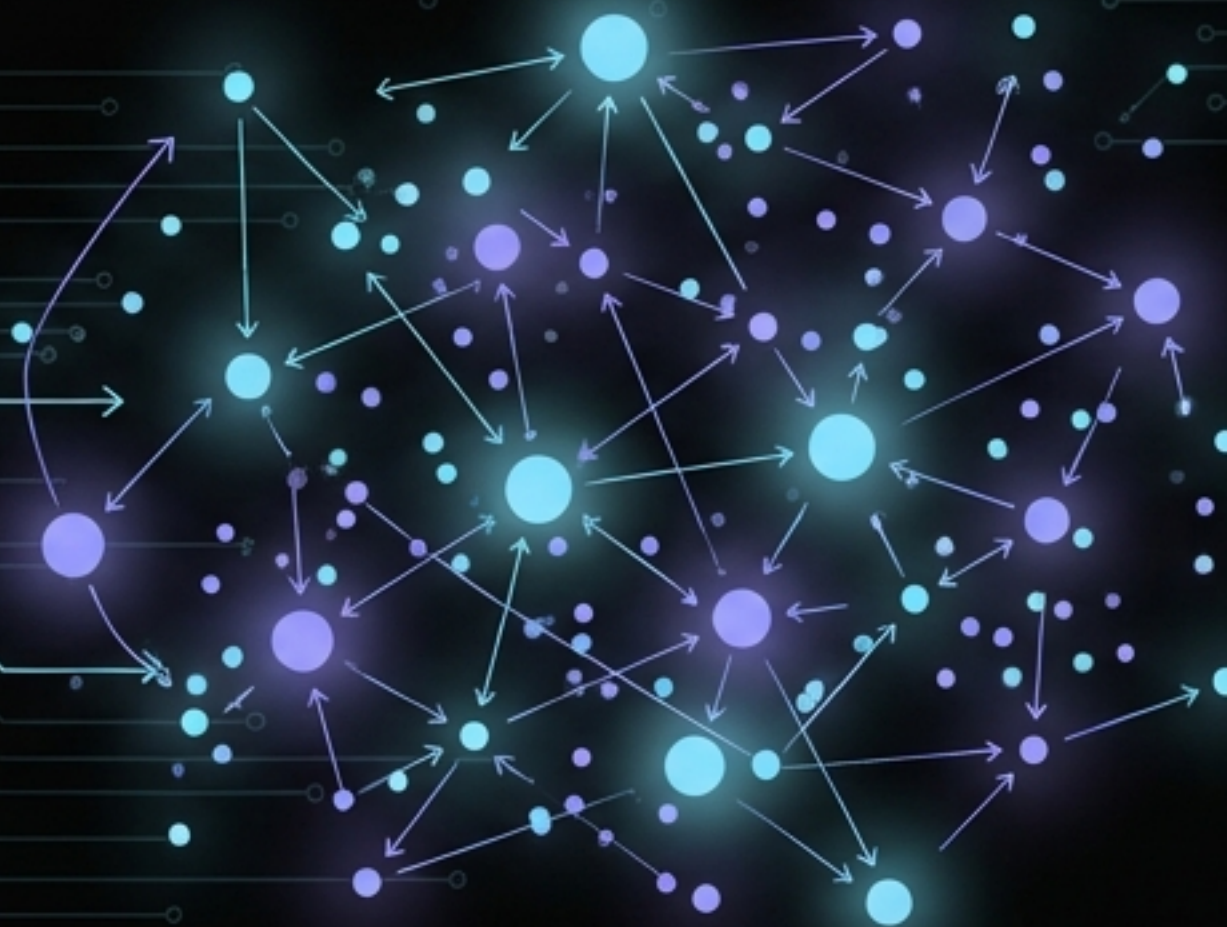
Beyond the God Model

The industry chased a single, centralised super-intelligence. The reality is emerging as specialized, distributed agents working in concert.

“One human being could not make an iPhone.”



Centralised God Model



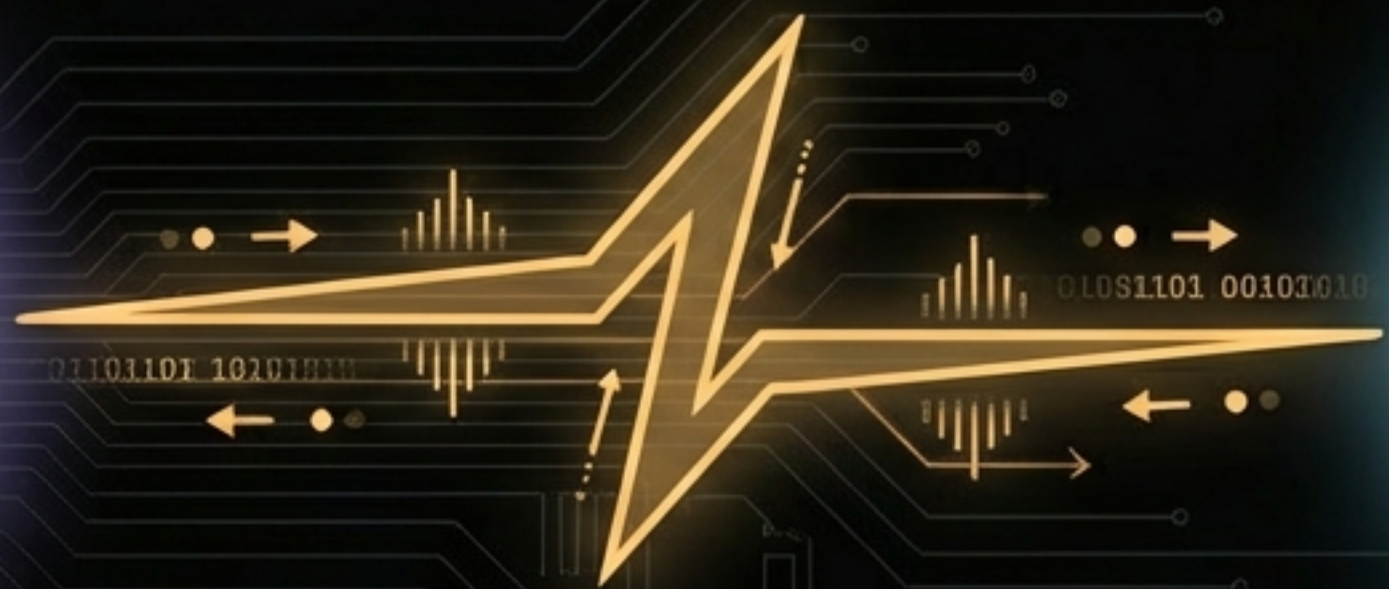
Swarm Intelligence

Bot-to-Bot Negotiation

Your personal bot talks to the service bot.
They negotiate outcomes more efficiently
than humans or a single generalist model.



My Bot



Negotiating Booking... Confirmed.



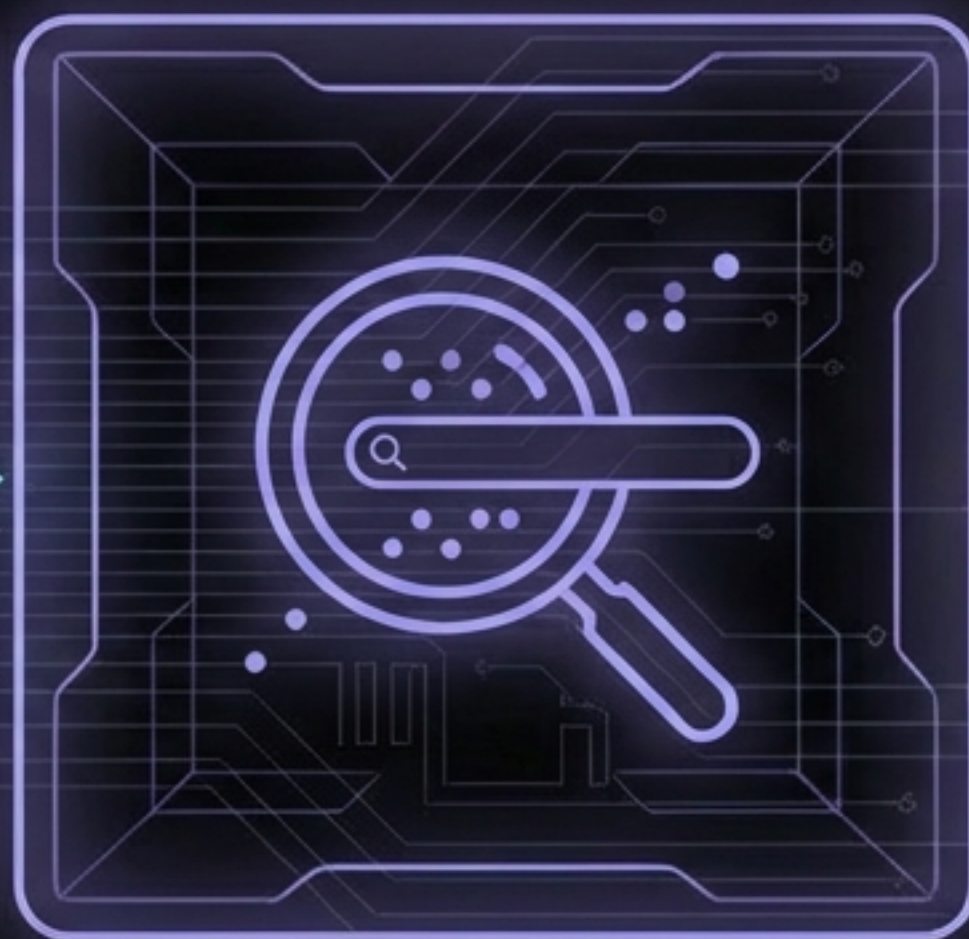
Restaurant Bot

The Specialisation of Intelligence

Just as society advanced through human specialisation, AI will advance through agent specialisation. We are moving from 'General Intelligence' to 'Community Intelligence'.



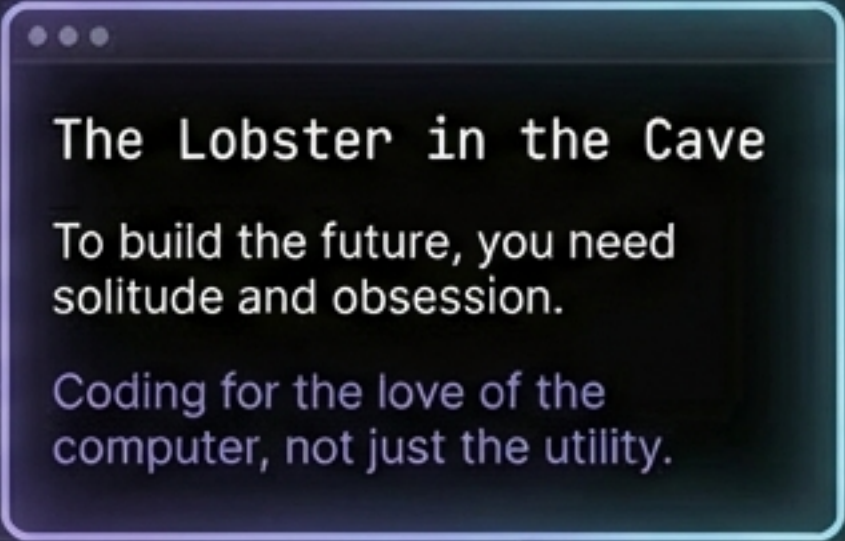
The Coder Agent



The Researcher Agent



The Negotiator Agent



The Lobster in the Cave

To build the future, you need
solitude and obsession.

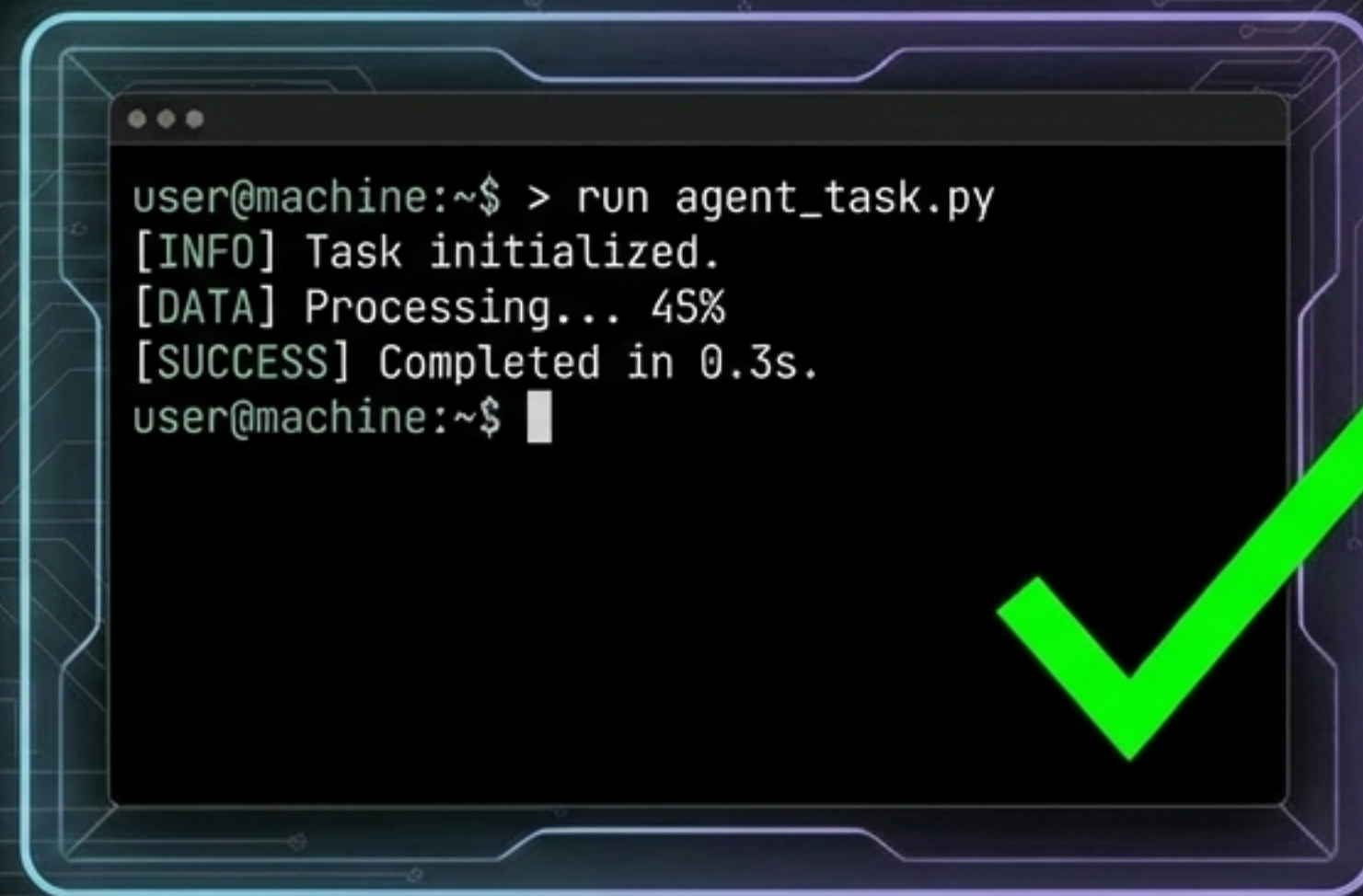
Coding for the love of the
computer, not just the utility.

The CLI is the Future

No complex 'Work Trees". No overhead. Giving agents the same tools humans use (Terminal, Browser) is more powerful than building custom tools for them.



Cluttered GUI (Rejected)



Clean CLI (Preferred)

Build for the Ghost.

The era of the App is over.
The era of the Agent has begun.

Based on the insights of Peter Steinberger, Creator of OpenClaw.